

# Range Update



## Scharmüller Hitches

**The Vapormatic Co. Ltd.**

Kestrel Way  
Sowton Industrial Estate  
Exeter EX2 7LA  
Tel. (44) 01392 435461  
[www.vapormatic.com](http://www.vapormatic.com)



## Applications John Deere

### Linkage & Hitches

#### Assembly hitch

**Stock no.**  
VLE2520



**Oe no.**  
00.167.01.0, SET1, A17

**Application**

5E SERIES: 5045, 5055, 5065, 5075, 5083, 5085, 5093, 5095, 5101, 5103, 5203, 5303

Manual Ladder Hitch

- Max. Permissible Vertical Load (kg): 2000
- Max. Permissible D-Value (kN): 34,5
- useable with Original Drawbar (ex factory)
- Colour JD-Green
- (330/25/32)

#### Assembly hitch

**Stock no.**  
VLE2521



**Oe no.**  
00.167.01.0, SET2, A17

**Application**

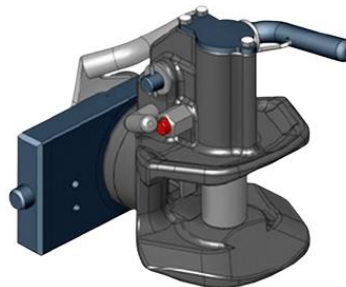
5E SERIES: 5045, 5055, 5065, 5075, 5083, 5085, 5093, 5095, 5101, 5103, 5203, 5303

Automatic Ladder Hitch

- Max. Permissible Vertical Load (kg): 2000
- Max. Permissible D-Value (kN): 34,5
- useable with Original Drawbar (ex factory)
- Colour JD-Green
- (330/25/32)

#### Assembly towing clevis

**Stock no.**  
VLE2560



**Oe no.**  
05.2007.00, A02

**Application**

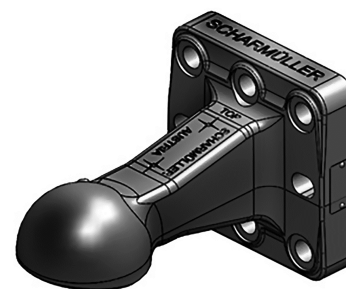
VLE2407

Standard Clevis with Adapter Plate

- Automatic Type (31mm Coupler Bolt) Minimat
- Max. Permissible Vertical Load (kg): 500
- Max. Permissible D-Value (kN): 23,9
- Turn able
- Adapter Plate Height 90
- Height Adjustable
- (225/16/25)

#### Ball hitch

**Stock no.**  
VLE6217



**Oe no.**  
00.650.90.1, A02

**Application**

Trailers

Towing Eye Flange Version

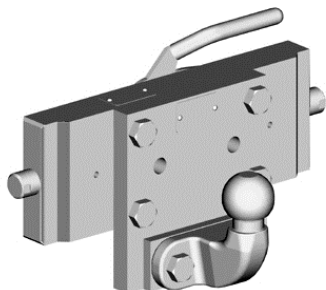
- K80@Towing Eye Ball Coupling System
- Max. Permissible Vertical Load (kg): 4000
- Max. Permissible D-Value (kN): 120
- Towing Eye Flange Vertical
- Flange Hole Pattern 145x145
- Hole Pattern Holes 8
- Screws/Thread M20
- Working Radius (mm) 252
- Colour Black

## Applications John Deere

### Linkage & Hitches

#### Ball hitch insert

**Stock no.**  
VLE2403



**Oe no.**  
00.508.21.0, A02

**Application**

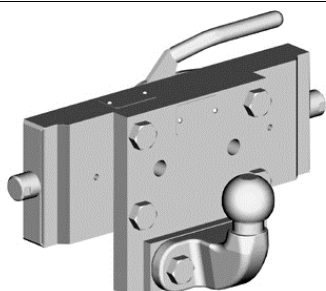
VLE2407

K50 Ladder Hitch Insert with Grab Handle

- ISO 50
- Max. Permissible Vertical Load (kg): 150
- Max. Permissible D-Value (kN): 17,2
- Screws/Thread M16
- Adapter Plate Height 90
- Height Adjustable
- (200/16/25)

#### Ball hitch insert

**Stock no.**  
VLE2404



**Oe no.**  
03.7225.00

**Application**

VLE2409

K50 Ladder Hitch Insert with Grab Handle

- ISO 50
- Max. Permissible Vertical Load (kg): 200
- Max. Permissible D-Value (kN): 17,0
- Screws/Thread M16
- Adapter Plate Height 120
- Height Adjustable
- S32 (225/25/32)

#### Ball hitch insert

**Stock no.**  
VLE2439



**Oe no.**  
05.6330.61, A02

**Application**

VLE2411, VLE2440

K80® Ladder Hitch Insert with Grab Handle

- Max. Permissible Vertical Load (kg): 3000
- Max. Permissible D-Value (kN): 89,3
- for Remote Control from other Producer
- Working Radius (mm) 152
- Adapter Plate Height 173
- Locking K80® Automatic
- Height Adjustable
- Remote Control to Relock possible
- Colour JD-Green
- (330/25/32)

#### Clevis hitch

**Stock no.**  
VLE2401



**Oe no.**  
03.3303.221

**Application**

VLE2411, VLE2440

Standard Clevis with Adapter Plate

- Automatic Clevis Type (38mm Coupler Bolt, A11)
- Max. Permissible Vertical Load (kg): 2000
- Max. Permissible D-Value (kN): 82,4
- For Remote Control from other Producer
- Turn able
- Adapter Plate Height 120
- Height Adjustable
- Colour Black
- (330/25/32)

## Applications John Deere

### Linkage & Hitches

#### Clevis hitch

**Stock no.**  
VLE2402



**Oe no.**  
03.3301.221

**Application**

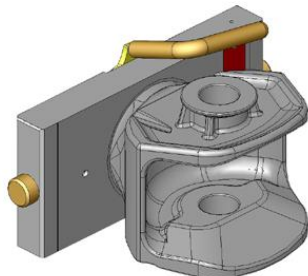
VLE2411, VLE2440

Standard Clevis with Adapter Plate

- Automatic Clevis Type (31mm Coupler Bolt, A10) CH-I
- Max. Permissible Vertical Load (kg): 2000
- Max. Permissible D-Value (kN): 82,4
- Remote Control Preparation for Remote Control from other Producer
- Turn able
- Adapter Plate Height 120
- Height Adjustable
- Colour Black
- (330/25/32)

#### Clevis insert

**Stock no.**  
VLE2408



**Oe no.**  
05.2009.06

**Application**

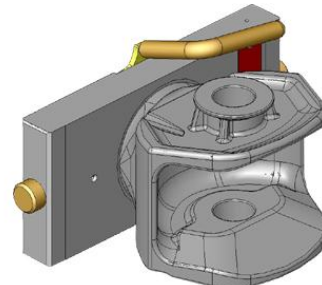
VLE2407

Standard Clevis with Adapter Plate

- Manual Clevis Type (Coupler Bolt 31mm),
- Max. Permissible Vertical Load (kg): 350
- Max. Permissible D-Value (kN): 23,9
- with Bundle
- Turn able
- Adapter Plate Height 90
- incl. 31mm Coupler Bolt
- Colour Black
- (225/16/25)

#### Clevis insert

**Stock no.**  
VLE2410



**Oe no.**  
03.2255.01, A02

**Application**

VLE2409

Standard Clevis with Adapter Plate

- Non Automatic Clevis Type (Coupler Bolt 31mm)
- Max. Permissible Vertical Load (kg): 1300
- Max. Permissible D-Value (kN): 35,0
- with Bundle
- Turnable
- Adapter Plate Height 120
- Height Adjustable
- incl. 31mm Coupler Bolt
- S32 (225/25/32)

#### Clevis insert

**Stock no.**  
VLE2447



**Oe no.**  
05.1809.060

**Application**

VLE2446

Standard Clevis with Adapter Plate

- Non Automatic Clevis Type (Coupler Bolt 31mm)
- Max. Permissible Vertical Load (kg): 350
- Max. Permissible D-Value (kN): 23,9
- with Bundle
- Turn able
- Adapter Plate Height 90
- Height Adjustable
- incl. 31mm Coupler Bolt
- Colour Black
- (180/16/25)

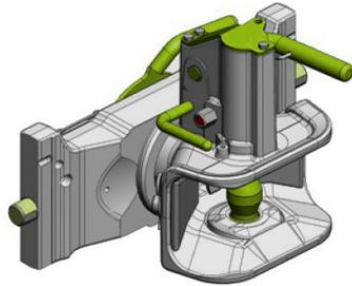


## Applications John Deere

### Linkage & Hitches

#### Clevis insert

**Stock no.**  
VLE6215



**Oe no.**  
07.3903.281, A17

**Application**

7R SERIES: 7200, 7210, 7215, 7230, 7250, 7260, 7270, 7280, 7290, 7310 8R SERIES (IIIB from 2014): 8270, 8295, 8320, 8345, 8370 8RT SERIES (IIIB from 2014): 8320, 8345, 8370

Standard Clevis with Adapter Plate

- Automatic Clevis Type (38mm Coupler Bolt, A11) CH-I
- Max. Permissible Vertical Load (kg): 2500
- Max. Permissible D-Value (kN): 97,1
- For Remote Control from other Producer
- Turnable
- Adapter Plate Height 160
- Height Adjustable
- Colour JD-Green
- S32 (390/25/32)

#### Drawbar pin

**Stock no.**  
VLE2038



**Oe no.**  
02.451.125

**Application**

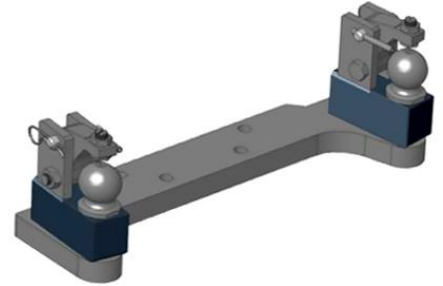
VLE2408, VLE2410

Coupler Bolt

- For Manual Clevis (Coupler Bolt 31mm)
- Bolt Diameter Ø 31 mm
- Hand Length 125mm

#### Forced steering component

**Stock no.**  
VLE6213



**Oe no.**  
00.521.0320.0, A02

**Application**

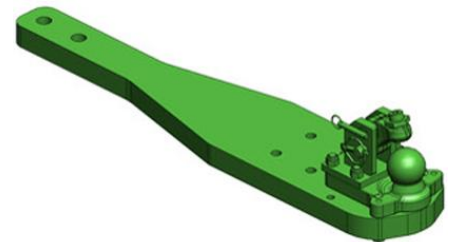
VLE6200, VLE2561

K50 Forced Steering Mounting for K80®-Heavy Duty Drawbars

- Double-Sided
- with Adjustable Keeper
- Distance K80® to K50 (mm) 250
- Admitted Steering Power up to 20kN (2to)

#### Heavy duty drawbar

**Stock no.**  
VLE2561



**Oe no.**  
00.964.388.0, A17

**Application**

7R SERIES: 7200, 7210, 7215, 7230, 7250, 7260, 7270, 7280, 7290, 7310

Heavy Duty Drawbar Standard

- K80® Ball Coupling System
- Max. Permissible Vertical Load (kg): 4000
- Max. Permissible D-Value (kN): 89,3
- Assembly-Positions 2
- Total Length (mm) 1142
- Width 240
- Thickness (mm) 50
- Locking K80® Manual
- Drilled Hole Ø (mm) 32
- fits to Sauermann Ladder-Hitch (ex factory) with Drawbar Frame
- Colour JD-Green

## Applications John Deere

### Linkage & Hitches

#### Hex bolt

**Stock no.**  
VLE2445

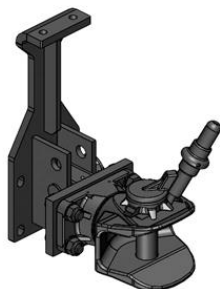


**Oe no.**  
10.953.201.0

**Application**  
VLE2400, VLE2449  
Adjusting screw M22x1.5 for K80® ball- keeper for ball inserts

#### Hitch assembly

**Stock no.**  
VLE2448

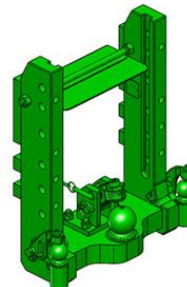


**Oe no.**  
05.5069.05, SET, A02

**Application**  
20 SERIES: 2320  
Details for 05.5069.05-SET-A02  
•Pluggable Clevis with Console  
•Manual Clevis Type (Coupler Bolt 31mm)  
•Max. Permissible Vertical Load (kg): 600  
•Max. Permissible D-Value (kN): 20,5  
•Screws/Thread M14  
•with Bundle  
•Turn able  
•incl. Console, Holder Pin L=125 and Screws-Set for mounting  
•Colour Black

#### Hitch assembly

**Stock no.**  
VLE2581



**Oe no.**  
00.169.80.0, A17

**Application**  
Series 6R: 6175, 6195, 6215  
Standard Ladder Hitch  
• K80® Ball Coupling System  
• Max. Permissible Vertical Load (kg): 4000  
• Max. Permissible D-Value (kN): 91,3  
• Locking K80® Manual  
• Integrated K50 Control Double-Sided with Keeper for Forced Steering System  
• Colour JD-Green  
• S32 (390/25/32)

#### Insert towing ball

**Stock no.**  
VLE2428



**Oe no.**  
00.505.02.0, A02

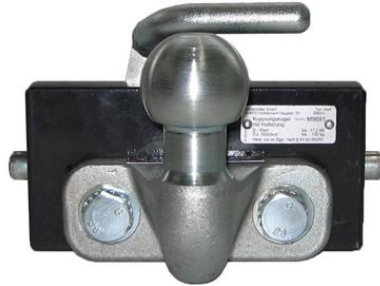
**Application**  
VLE2448  
Towing Ball Attachment - Flangeball Car 50  
•ISO 50 (Car),  
•Max. Permissible Vertical Load (kg): 200  
•Max. Permissible D-Value (kN): 17  
•Screws/Thread M16  
•Hole Pattern/Hole Distance (mm) 45  
•Drilled Hole Ø (mm) 20  
•Shaft Height x Width 85x40

**Applications John Deere**

**Linkage & Hitches**

**Insert towing ball**

**Stock no.**  
VLE2429



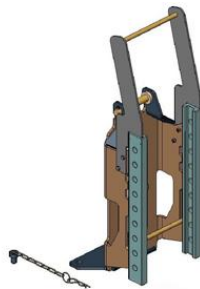
**Oe no.**  
00.508.11.0, A02

**Application**

- VLE2446 , John Deere 2520, 2720  
Ladder Hitch Insert with Grab Handle
- ISO 50 (Car), (180/16/25)
  - Max. Permissible Vertical Load (kg): 150
  - Max. Permissible D-Value (kN): 17,2
  - Screws/Thread M16
  - Adapter Plate Height 90
  - Height Adjustable
  - (180/16/25)

**Ladder hitch**

**Stock no.**  
VLE2407



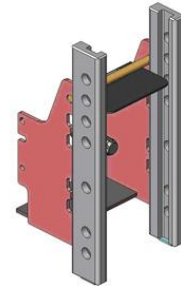
**Oe no.**  
00.147.05.1, A17

**Application**

- SERIES 3120-3720: 3120, 3320, 3520, 3720 SERIES 3R: 3033, 3037, 3038, 3039, 3045, 3046
- Standard Ladder Hitch
- Max. Permissible Vertical Load (kg): 250
  - Max. Permissible D-Value (kN): 21,7
  - Colour JD Green
  - (225/16/25)

**Ladder hitch**

**Stock no.**  
VLE2409



**Oe no.**  
00.149.02.0, A02

**Application**

- SERIES 4010-4710: 4510, 4610, 4710 SERIES 4100-4700: 4500, 4600, 4700 SERIES 4120-4720: 4120, 4320, 4520, 4720
- Standard Ladder Hitch
- Max. Permissible Vertical Load (kg): 600
  - Max. Permissible D-Value (kN): 21,8
  - Colour Black
  - S32 (225/25/32)

**Ladder hitch**

**Stock no.**  
VLE2411



**Oe no.**  
00.158.83.1, A17

**Application**

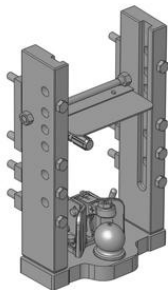
- SERIES 6000: 6100, 6200, 6300, 6400, 6600, 6800, 6900  
SERIES 6010: 6010, 6110, 6210, 6310, 6410, 6510, 6610, 6810, 6910  
SERIES 6020: 6020, 6120, 6220, 6320, 6420, 6520, 6620, 6820, 6920  
SERIES 6030: 6130, 6230, 6330, 6430, 6530, 6534, 6630, 6830, 6930  
SERIES 6M: 6115, 6125, 6130, 6140, 6150, 6170  
SERIES 6R: 6105, 6110, 6115, 6120, 6125, 6130, 6135, 6140, 6145, 6150, 6155, 6170, 6190, 6210  
SERIES 7000: 7600, 7700, 7800  
SERIES 7010: 7210, 7410, 7510, 7610, 7710, 7810  
SERIES 7020: 7220, 7320, 7420, 7520, 7720, 7820, 7920  
SERIES 7030: 7130, 7230, 7330, 7430, 7530, 7730, 7830, 7930
- Manual Standard Ladder Hitch
- K80® Ball Coupling System
  - Max. Permissible Vertical Load (kg): 4000
  - Max. Permissible D-Value (kN): 91,3
  - Locking K80® Manual
  - Colour JD-Green
  - (330/25/32)

## Applications John Deere

### Linkage & Hitches

#### Ladder hitch

**Stock no.**  
VLE2440



**Oe no.**  
00.158.88.0, A17

**Application**

SERIES 6000: 6100, 6200, 6300, 6400, 6600, 6800, 6900  
 SERIES 6010: 6010, 6110, 6210, 6310, 6410, 6510, 6610, 6810, 6910  
 SERIES 6020: 6020, 6120, 6220, 6320, 6420, 6520, 6620, 6820, 6920  
 SERIES 6030: 6130, 6230, 6330, 6430, 6530, 6534, 6630, 6830, 6930  
 SERIES 6M: 6115, 6125, 6130, 6140, 6150, 6170  
 SERIES 6R: 6105, 6110, 6115, 6120, 6125, 6130, 6135, 6140, 6145, 6150, 6155, 6170, 6190, 6210  
 SERIES 7000: 7600, 7700, 7800  
 SERIES 7010: 7210, 7410, 7510, 7610, 7710, 7810  
 SERIES 7020: 7220, 7320, 7420, 7520, 7720, 7820, 7920  
 SERIES 7030: 7130, 7230, 7330, 7430, 7530, 7730, 7830, 7930

Automatic Standard Ladder Hitch

- K80® Ball Coupling System
- Max. Permissible Vertical Load (kg): 4000
- Max. Permissible D-Value (kN): 91,3
- Locking K80® Automatic
- Colour JD-Green
- (330/25/32)

#### Ladder hitch

**Stock no.**  
VLE2446



**Oe no.**  
00.147.00.2, A02

**Application**

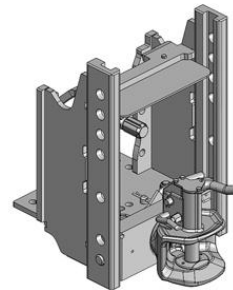
SERIES 2320-2720: 2520, 2720 SERIES 4010-4710: 4110, 4115 SERIES 4100-4700: 4100

Standard Ladder Hitch

- Max. Permissible Vertical Load (kg): 150
- Max. Permissible D-Value (kN): 9,2
- Colour Black
- (180/16/25)

#### Ladder hitch

**Stock no.**  
VLE2569



**Oe no.**  
00.167.02.0, A17 & 03.3301.15, A17

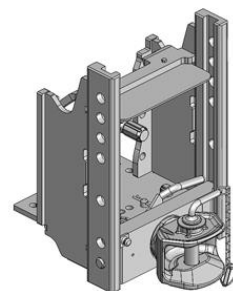
**Application**

SERIES 5E 12, 12 PR (from end 2014): 5045E, 5055E, 5065E, 5075E, 5085E, 5093E, 5095E, 5101E,  
 Automatic Ladder Hitch with drawbar 12x12 Transmission

- Max. Permissible Vertical Load (kg): 2000
- Max. Permissible D-Value (kN): 34,5
- Colour JD-Green
- (330/25/32)

#### Ladder hitch

**Stock no.**  
VLE2570



**Oe no.**  
00.167.02.0, A17 & 02.451.600 & 03.3305.011, A17

**Application**

SERIES 5E 12, 12 PR (from end 2014): 5045E, 5055E, 5065E, 5075E, 5085E, 5093E, 5095E, 5101E,  
 Manual Ladder Hitch with drawbar 12x12 Transmission

- Max. Permissible Vertical Load (kg): 2000
- Max. Permissible D-Value (kN): 34,5
- Bolt Diameter Ø (mm) 31 / Hand Length (mm) 125
- Colour JD-Green
- (330/25/32)

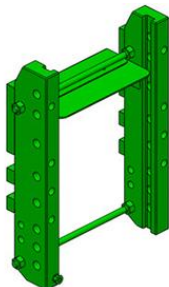


## Applications John Deere

### Linkage & Hitches

#### Ladder hitch

**Stock no.**  
VLE2579



**Oe no.**  
00.169.00.0, A17

**Application**

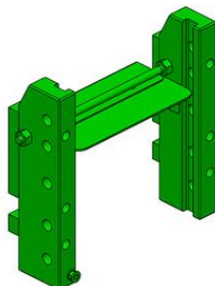
SERIES 6R: 6175, 6195, 6215

Standard Ladder Hitch

- Max. Permissible Vertical Load (kg): 2000 / 3000 / 4000
- Max. Permissible D-Value (kN): 91,3
- Colour JD-Green
- S32 (390/25/32)

#### Ladder hitch

**Stock no.**  
VLE2580



**Oe no.**  
00.169.10.0, A17

**Application**

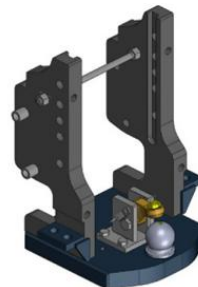
SERIES 6R: 6175, 6195, 6215

Short Ladder Hitch

- Max. Permissible Vertical Load (kg): 2000
- Max. Permissible D-Value (kN): 91,3
- Colour JD-Green
- S32 (390/25/32)

#### Ladder hitch

**Stock no.**  
VLE6200



**Oe no.**  
00.159.81.0, A17

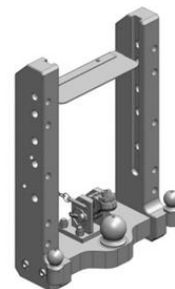
**Application**

SERIES 8030: 8130, 8230, 8330, 8430, 8530 SERIES 8R: 8245, 8260, 8270, 8285, 8295, 8310, 8320, 8335, 8345, 8360

- Max. Permissible Vertical Load (kg): 4000
- Max. Permissible D-Value (kN): 102,4
- Locking K80@ Manual
- Colour JD-Green
- (330/25/32)

#### Ladder hitch

**Stock no.**  
VLE6214



**Oe no.**  
00.160.80.0, A17

**Application**

SERIES 7R: 7200, 7210, 7215, 7230, 7250, 7260, 7270, 7280, 7290, 7310

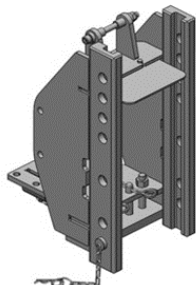
- Max. Permissible Vertical Load (kg): 4000
- Max. Permissible D-Value (kN): 102,4
- Locking K80@ Manual
- Integrated K50 Control Double-Sided with Keeper for Forced Steering System
- Colour JD-Green
- S32 (390/25/32)

## Applications John Deere

### Linkage & Hitches

#### Ladder hitch

**Stock no.**  
VLE6216



**Oe no.**  
00.149.03.0, A17

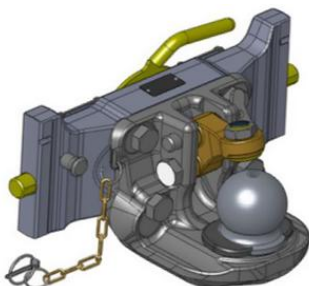
**Application**

SERIES 4M: 4049, 4066 SERIES 4R: 4049, 4066

- Max. Permissible Vertical Load (kg): 600
- Max. Permissible D-Value (kN): 21,8
- Useable with Original Drawbar (ex factory)
- Colour JD-Green
- S32 (225/25/32)

#### Ladder hitch insert

**Stock no.**  
VLE2563



**Oe no.**  
07.6390.42, A17

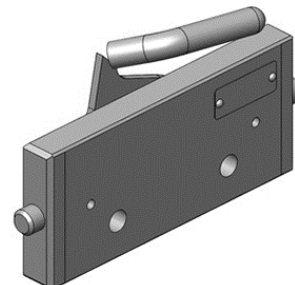
**Application**

SERIES 7R: 7200, 7210, 7215, 7230, 7250, 7260, 7270, 7280, 7290, 7310 SERIES 8R (IIIB from 2014) : 8270, 8295, 8320, 8345, 8370 SERIES 8RT (IIIB from 2014) : 8320, 8345, 8370

- Max. Permissible Vertical Load (kg): 3000
- Max. Permissible D-Value (kN): 97,1
- Screws/Thread M20
- Working Radius (mm) 163
- Adapter Plate Height 160
- Locking K80@ Manual
- Height Adjustable
- for Top- and Bottom Connection
- Colour JD-Green
- S32 (390/25/32)

#### Ladder hitch insert

**Stock no.**  
VLE2575



**Oe no.**  
00.507.00.0, A17

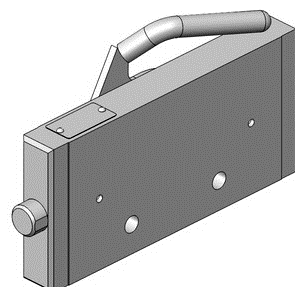
**Application**

Various

- Max. Permissible Vertical Load (kg): 150
- Max. Permissible D-Value (kN): 17,2
- Hole Pattern Holes 2
- Screws/Thread M16
- Adapter Plate Height 90
- Height Adjustable
- Hole Pattern/Hole Distance (mm) 90
- Adapter plate with grab handle
- (225/16/25)

#### Ladder hitch insert

**Stock no.**  
VLE2576



**Oe no.**  
03.7225.10, A02

**Application**

Various

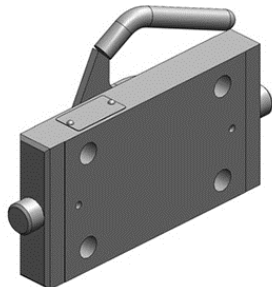
- Max. Permissible Vertical Load (kg): 1200
- Max. Permissible D-Value (kN): 25,5
- Hole Pattern Holes 2
- Screws/Thread M16
- Adapter Plate Height 120
- Height Adjustable
- Hole Pattern/Hole Distance (mm) 90
- Adapter plate with grab handle
- S32 (225/25/32)

## Applications John Deere

### Linkage & Hitches

#### Ladder hitch insert

**Stock no.**  
VLE2577



**Oe no.**  
03.7225.32, A02

**Application**

Various

- Max. Permissible Vertical Load (kg): 1200
- Max. Permissible D-Value (kN): 25,5
- Hole Pattern Holes 4
- Screws/Thread M20
- Adapter Plate Height 120
- Height Adjustable
- Flange Hole Pattern (mm) 140x80
- Adapter plate with grab handle
- S32 (225/25/32)

#### Ladder insert

**Stock no.**  
VLE2449



**Oe no.**  
07.6330.42, A17

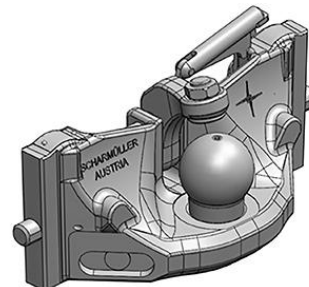
**Application**

Various

- Inserts with Grab Handle
- K80® Ball Coupling System
- Max. Permissible Vertical Load (kg): 3000
- Max. Permissible D-Value (kN): 89,3
- Screws/Thread M20
- Adapter Plate Height 150
- Locking K80® Manual
- Height Adjustable
- for Top- and Bottom Connection
- Colour Black
- (330/25/32)

#### Ladder insert

**Stock no.**  
VLE2571



**Oe no.**  
05.6390.46, A02

**Application**

Various

- Inserts with Grab Handle
- K80® Ball Coupling System,
- Product compatibly with
- Forced Steering Components Mounting for K80®-Ball Coupling Inserts : VLE2572
- Forced Steering Components Mounting for K80®-Ball Coupling Inserts : VLE2573
- Max. Permissible Vertical Load (kg): 4000
- Max. Permissible D-Value (kN): 120
- Working Radius (mm) 77
- Adapter Plate Height 160
- Locking K80® Manual
- Height Adjustable
- for Top- and Bottom Connection
- Colour Black
- S32 (390/25/32)

#### Locking pin

**Stock no.**  
VLE2442



**Oe no.**  
02.470.948

**Application**

VLE2402  
coupler-bolt set 38mm CH-I

## Applications John Deere

### Linkage & Hitches

#### Locking pin

**Stock no.**  
VLE2443



**Oe no.**  
02.470.947

**Application**  
VLE2401  
coupler-bolt set 31mm CH-I

#### Lower bush

**Stock no.**  
VLE2501



**Oe no.**  
10.713.222.1

**Application**  
VLE2401, VLE2402  
Lower bush CH-I

#### Pickup hitch insert

**Stock no.**  
VLE2413



**Oe no.**  
00.425.00.3, A17

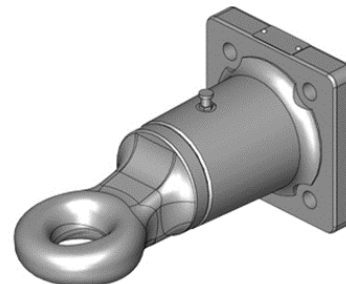
**Application**  
SERIES 6020: 6820, 6920 SERIES 6030: 6830, 6930 SERIES 7020: 7220, 7320, 7420, 7520 SERIES 7030: 7130, 7230, 7330, 7430, 7530

Pick-Up Hitch Insert

- K80® Ball Coupling System
- Max. Permissible Vertical Load (kg): 3000
- Max. Permissible D-Value (kN): 78,5
- Total Length (mm) 354
- Working Radius (mm) 285
- Hole Pattern/Hole Distance (mm) 360x50
- Drilled Hole Ø (mm) 25
- Shaft Height x Width 45x70
- fits to Sauermann Pick-Up Hitch
- Colour JD-Green

#### Ring hitch

**Stock no.**  
VLE2574



**Oe no.**  
00.652.43.0, A02

**Application**  
Trailers  
Towing Eye Flange Version

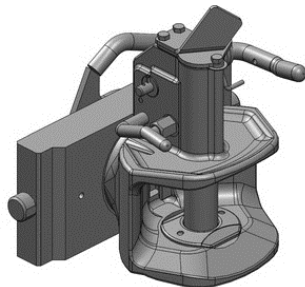
- Ring Towing Eye DØ50mm
- Technical Values
- Max. Permissible Vertical Load (kg): 2500
- Max. Permissible D-Value (kN): 82,4
- Towing Eye Flange Vertical
- Flange Hole Pattern 110x100
- Hole Pattern Holes 4
- Screws/Thread M16
- Working Radius (mm) 265
- Towing Eye Turnable
- Colour Black

## Applications John Deere

### Linkage & Hitches

#### Rotating clevis

**Stock no.**  
VLE2578



**Oe no.**  
03.2251.02, A02

**Application**

Various

Automatic Clevis (31mm Coupler Bolt, A10)

- Max. Permissible Vertical Load (kg): 1300
- Max. Permissible D-Value (kN): 35,0
- Turn able
- Adapter Plate Height 120
- Height Adjustable
- (225/25/32)

#### Seal

**Stock no.**  
VLE2444



**Oe no.**  
20.412.000

**Application**

VLE2400, VLE2449  
Foam dust ring K80

#### Spring

**Stock no.**  
VLE2441



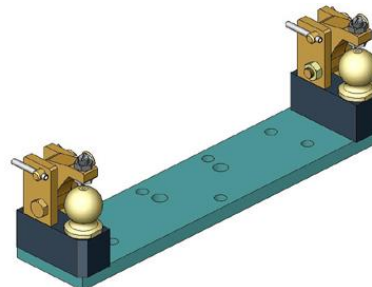
**Oe no.**  
20.181.020

**Application**

VLE2401, VLE2402  
Torsion spring

#### Steering forced

**Stock no.**  
VLE2104



**Oe no.**  
00.521.15.0

**Application**

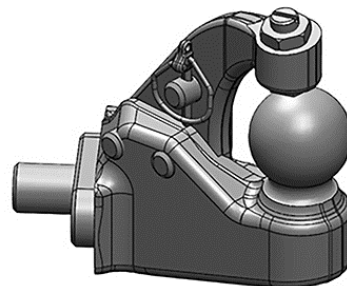
VLE2411, VLE2440

K50 Forced Steering Component mounting for K80@Ladder Hitch

- Double-Sided
- with Adjustable Keeper
- Distance K80@to K50 (mm) 250
- Admitted Steering Power up to 20kN (2to)

#### Steering forced

**Stock no.**  
VLE2572



**Oe no.**  
00.520.65.0

**Application**

VLE2571

K50 Forced Steering Component Mounting for K80@Ball Coupling Insert

- Inserts for Ladder Hitches Insert with Grab Handle: VLE2571
- K50 ball assembly for forced steering - Left hand side
- with Adjustable Keeper
- Distance K80@to K50 (mm) 250
- Admitted Steering Power up to 20kN (2to)

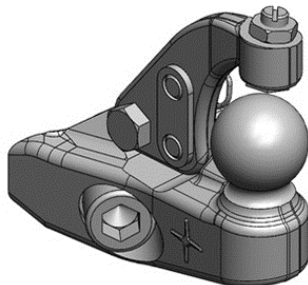


## Applications John Deere

### Linkage & Hitches

#### Steering forced

**Stock no.**  
VLE2573



**Oe no.**  
00.520.66.0

**Application**

- VLE2571  
K50 Forced Steering Component Mounting for K80®Ball Coupling Insert
- Inserts for Ladder Hitches Insert with Grab Handle: VLE2571
  - K50 ball assembly for forced steering - Right hand side
  - with Adjustable Keeper
  - Distance K80®to K50 (mm) 250
  - Admitted Steering Power up to 20kN (2to)

#### Towing hitch

**Stock no.**  
VLE2427



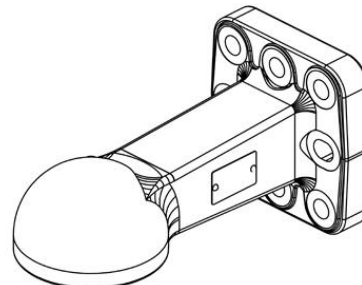
**Oe no.**  
00.655.90.0, A02

**Application**

- Trailers  
K80®Towing Eye Flange Version
- Adapted for Annaburger Trailers
  - Max. Permissible Vertical Load (kg): 4000
  - Max. Permissible Dc-Value (kN): 102,4
  - Permissible Total Weight Trailer (kg): 34000
  - Towing Eye Flange Horizontal
  - Flange Hole Pattern 130x115
  - Hole Pattern Holes 6
  - Screws/Thread M20
  - Working Radius (mm) 314
  - Colour Black

#### Towing hitch socket

**Stock no.**  
VLE2405



**Oe no.**  
00.652.90.0

**Application**

- Trailers  
K80®Towing Eye Flange Version
- Max. Permissible Vertical Load (kg): 2500
  - Max. Permissible D-Value (kN): 91,7
  - Permissible Total Weight Trailer (kg): 25000
  - Towing Eye Flange Vertical
  - Flange Hole Pattern 110x100
  - Hole Pattern Holes 8
  - Screws/Thread M16
  - Working Radius (mm) 240
  - Colour Black