

# New Parts Bulletin



**March 2024**

## Braking

Heavy duty braking - Air / PA12 Nylon Air Tube

**VFM4517** Pack qty 1

Nylon tube



© VAPORMATIC

Trailer parts .

Black PA12 Nylon tube 12mm diameter x 1.5 for system connection using push-in and compression pipe fittings. 25m roll.

## Workshop

Abrasives and cutting discs / Cutting discs

**VLA1726** Pack qty 25

Flat metal cutting disc



© VAPORMATIC

Accessories New .

Hydraulics .

230mm x3mm Flat metal cutting disc

## Tools

Power tool accessories / Grinding discs

**VLA1732** Pack qty 25

Grit 60 flap disc



© VAPORMATIC

Accessories New .

Original equipment manufacturers names and part number are quoted for reference purposes only and are not intended to infer that our replacement parts are used as original equipment.

Public

## Workshop

Abrasives and cutting discs / Rotary wire brush

**VLA1734** Pack qty 10

Poly disc

Accessories New .



## Tools

Power tool accessories / Rotary wire brush

**VLC1076** Pack qty 1

Rotary wire brush

Accessories New .



## Tools

Power tool accessories / Rotary wire brush

**VLC1080** Pack qty 1

Rotary wire brush

Accessories New .



## Tools

Power tool accessories / Rotary wire brush

**VLC1081** Pack qty 1

Crimped wire wheel

Accessories New .



## Lighting

Trailer lighting / Rear fog lamp

**VLC2438** Pack qty 1

Fog lamp

Accessories .

Accessories New .

Trailer parts .



---

## Lighting

Trailer lighting / Rear lamp

**VLC2439** Pack qty 1

Reversing lamp



Accessories .

Accessories New .

Trailer parts .

---

## Lubrication, Fuel and Fluids

Hydraulic oil / Hydraulic MG 46 Blue (H076)

**VLL1186** Pack qty 1

Hydraulic oil



Accessories New .

Ultramax MG 46 Blue is suitable for a wide range of heavy duty industrial applications including those where low temperatures are encountered as well agricultural and construction sectors. It is particularly suited for use in Case\_Poclair equipment.

---

## Lubrication, Fuel and Fluids

Hydraulic oil / Hydraulic MG 32 (H015)

**VLL1713** Pack qty 1

Hydraulic oil



Accessories New .

The Ultramax MG range of hydraulic oils is suitable for a wide range of industrial applications including those where low temperatures are encountered (frozen food stores etc), as well agricultural and construction sectors.

---

## Lubrication, Fuel and Fluids

Hydraulic oil / Hydraulic MG 46 (H017)

**VLL1722** Pack qty 1

Hydraulic oil



Accessories New .

The Ultramax MG range of hydraulic oils is suitable for a wide range of industrial applications including those where low temperatures are encountered (frozen food stores etc), as well agricultural and construction sectors.

## Lubrication, Fuel and Fluids

### Hydraulic oil / Hydraulic MG 46 (H017)

**VLL1725**      **Pack qty 1**

Hydraulic oil



Accessories New .

The Ultramax MG range of hydraulic oils is suitable for a wide range of industrial applications including those where low temperatures are encountered (frozen food stores etc), as well agricultural and construction sectors.

## Ground engaging

### Drill / Furrow opener wheel bearing

**VLD3243**      **Pack qty 1**

Bearing

John Deere AN281357

John Deere - 1725C, 1760, 1760NT, 1770NT, 1780, 750A.

#### Technical Details

Inner diameter	16.25 mm
Outer diameter	40 mm
Inner width	18 mm
Outer width	12 mm



## Grass Land Equipment

### Baler / Cleaning roller - bearing

**VLD3244**      **Pack qty 1**

Bearing

John Deere JD9338

John Deere - 450M, 460R, 540, 545, 550, 556, 559, 560M, 560R, 568, 569, 572, 582, 592, 842, 852, 862, 864, HD35F, HD35R, HD35X, HD40F, HD40R, HD40X, HD45F, HD45R, HD45X, HD50F, HD50R, V451G, V451M, V461M.

#### Technical Details

Inner diameter	25.4 mm
Outer diameter	62 mm
Inner width	24 mm
Outer width	16 mm



## Ground engaging

### Drill / Wheel frame - bearing

**VLD3245**      **Pack qty 1**

Bearing

John Deere AA28271

John Deere - 1705, 1710, 1725C, 1730, 1735, 1755, 1770.

#### Technical Details

Inner diameter	22.7 mm
Outer diameter	52 mm
Inner width	23 mm
Outer width	15 mm



## Ground engaging

### Drill / Row cleaner wheel - bearing

**VLD3246**      **Pack qty 1**

Bearing

John Deere AA38601

John Deere - 1710, 1730, 1760, 1760NT, 1770, 1770NT, 1780.

#### Technical Details

Inner diameter	30 mm
Outer diameter	55 mm
Inner width	23 mm
Outer width	23 mm
Base size	Metric



## Ground engaging

### Drill / Furrow closing wheel bearing

**VLD3247**      **Pack qty 1**

Bearing

John Deere AA34132

John Deere - 1710, 1730, 1760, 1760NT, 1770, 1770NT, 1780.

#### Technical Details

Inner diameter	17 mm
Outer diameter	40 mm
Inner width	14 mm
Outer width	12 mm
Base size	Metric





## Grass Land Equipment

### Baler / Wrapping dispenser bearing

VLD3248 Pack qty 1

Bearing

John Deere DC223312

John Deere - C441R, C451R, C461R.

#### Technical Details

Inner diameter	30 mm
Outer diameter	62 mm
Inner width	16 mm
Outer width	16 mm



## Grass Land Equipment

### Baler / Idler sprocket bearing

VLD3249 Pack qty 1

Bearing

John Deere DC213374

John Deere - 990, C440R, C451R, C461R, F440M, V451R, V461R.

#### Technical Details

Inner diameter	40 mm
Outer diameter	80 mm
Inner width	18 mm
Outer width	18 mm



## Ground engaging

### Drill / Furrow closing wheel bearing

VLD3272 Pack qty 1

Bearing

John Deere JD8573

John Deere - 1710, 1725C, 1730, 1760NT, 1770NT, 1780, 770, 780.

#### Technical Details

Inner diameter	16 mm
Outer diameter	40 mm
Inner width	13 mm
Outer width	13 mm



## Crop processing

### Kernel Processor / Upper roller support bearing

**VLD3419** Pack qty 1

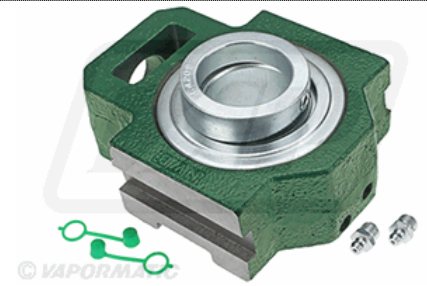
Bearing and housing

John Deere AZ100856

John Deere - 7200, 7300, 7400, 7500, 7700, 7800.

#### Technical Details

Inner diameter	45 mm
Width	150 mm
Height	67.5 mm
Hole centres	- mm
Base size	Metric



## Threshing

### Concave / Rasp bar mounting bolt washer

**VLG2016** Pack qty 10

Rasp bar washer

John Deere Z68970

John Deere - 2254, 2256, 2258, 2264, 2266, 2266EXTRA, 9400, 9410, 9450, 9500, 9500SH, 9510, 9510SH, 9540iWTS, 9540WTS, 9550, 9550SH, 9560iWTS, 9560WTS, 9580iWTS, 9580WTS, 9600, 9610, 9640iWTS, 9640WTS, 9650, 9650CTS, 9660iWTS, 9660WTS, 9680iWTS, 9680WTS, 9780CTS, 9780iCTS, C670, CTS, CTS II, T550, T560, T660, T670, W540, W550, W650, W660.

#### Technical Details

Inside diameter	M12
Outside diameter	30x32 mm
Qty	10



## Threshing

### Rotor / Threshing element

**VLH6487** Pack qty 1

Rasp bar kit

John Deere AH216674

John Deere - 9650STS, 9670STS, 9750STS, 9770STS, 9870STS, 9880iSTS, 9880iSTS HM, 9880STS, S650, S660, S670, S670 HM, S680, S680 HM, S685, S690, S690 HM, S760, S770, S780, S785, S790.

Bullet or TriStream Rotor. High wear. Grain / Corn 1st row fitment.



## Grain transfer

### Clean grain elevator / Chain link - Pin

**VLH6498**      **Pack qty 5**

Pin

John Deere Z42619

John Deere - 1055, 1065, 1068H, 1072, 1075, 1075H4, 1085, 1085H4, 1155, 1157, 1158, 1166, 1166H4, 1169, 1169H4, 1174, 1174H4, 1177, 1177H4, 1188, 1188H4, 2054, 2056, 2058, 2254, 2256, 2258, 2264, 2266, 2266EXTRA, 4435, 4435HY, 965H, 968H, 975, 975H, 985, 985H4.



© VAPORMATIC

## Header

### Cutter bar / Knife back - joiner

**VLH6502**      **Pack qty 1**

Knife joint

John Deere AH143576

John Deere - 614R, 615R, 616R, 618R, 620R, 622R, 625R, 630R, 635R, 822, 918, 920, 922, 925.



© VAPORMATIC

## Threshing

### Concave / Extension finger

**VLH6534**      **Pack qty 1**

Concave finger

John Deere Z56405

John Deere - 2054, 2056, 2058, 2064, 2066, 2254, 2256, 2258, 2264, 2266, 2266EXTRA, 9540iWTS, 9540WTS, 9560iWTS, 9560WTS, 9580iWTS, 9580WTS, 9640iWTS, 9640WTS, 9660iWTS, 9660WTS, 9680iWTS, 9680WTS, W540, W550, W650, W660.



© VAPORMATIC

## Threshing

### Concave / Limit curtain

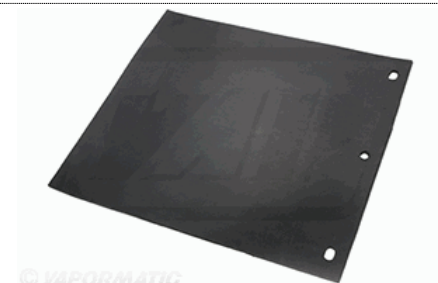
**VLH6535**      **Pack qty 1**

Curtain

John Deere Z64089

John Deere - 2054, 2056, 2058, 2064, 2066, 2254, 2256, 2258, 2264, 2266, 2266EXTRA, 9540iWTS, 9540WTS, 9560iWTS, 9560WTS, 9580iWTS, 9580WTS, 9640iWTS, 9640WTS, 9660iWTS, 9660WTS, 9680iWTS, 9680WTS, W540, W550, W650, W660.

Size = L - 261mm x H - 290mm x W - 3mm.



© VAPORMATIC



## Threshing

### Concave / Limit curtain

**VLH6536**      **Pack qty 1**

Curtain

John Deere Z52657

John Deere - 2064, 2066, 2264, 2266, 2266EXTRA, 9640iWTS, 9640WTS, 9660iWTS, 9660WTS, 9680iWTS, 9680WTS, W650, W660.

Size = L - 1660mm x H - 210mm x W - 3mm.



© VAPORMATIC

## Threshing

### Concave / Limit curtain

**VLH6537**      **Pack qty 1**

Curtain

John Deere Z46615

John Deere - 2054, 2056, 2058, 2254, 2256, 2258, 9540iWTS, 9540WTS, 9560iWTS, 9560WTS, 9580iWTS, 9580WTS, W540, W550.

Size = L - 1368mm x H - 210mm x W - 3mm.



© VAPORMATIC

## Straw discharge

### Straw chopper rotor / Blade kit

**VLH6560**      **Pack qty 1**

Kit blade

John Deere AH205909

John Deere - 9500, 9500SH, 9510, 9510SH, 9550, 9550SH, 9600, 9610, 9650, 9650CTS, 9650STS, 9750STS, 9880STS.



© VAPORMATIC

## Transmission drive

### Belts RH / Feed Accelerator belt

**VLM9253**      **Pack qty 1**

Drive belt

John Deere HXE95511

John Deere - 9470STS, 9570STS, 9670STS, 9770STS, 9870STS, S650, S660, S670, S670 HM, S680, S680 HM, S685, S685 HM, S690, S690 HM, S760, S770, S780, S785, S790.



© VAPORMATIC

## Transmission drive

### Belts LH / Straw Chopper Intermediate belt

**VLM9264** Pack qty 1

Drive belt

John Deere HXE124868

John Deere - S650, S660, S670, S670 HM, S680, S680 HM, S685, S685 HM, S690, S690 HM, S760, S770, S780, S790.



## Service

### Filtration / Fuel filter

**VPD6270** Pack qty 1

Fuel filter

John Deere RE546336

John Deere - 5080R, 5080RN, 5090R, 5090RN, 5100R, 5100RN, 5115M, 5115R, 5125R, 6090MC, 6090RC, 6100MC, 6100RC, 6105M, 6110M, 6110MC, 6110RC, 6115J, 6115M, 6115R, 6125J, 6125M, 6125R, 6130, 6130M, 6130R, 6140M, 6225, 6230, 6230 Premium, 6325, 6330, 6330 Premium, 6425, 6430, 6430 Premium, 6525, 6534, 6534 Premium.

John Deere - 4045HBM02, 4045HL282, 4045HL283, 4045HL284, 4045HL287, 4045HL288, 4045HL289, 4045HL480, 4045HL481, 4045HL482, 4045HL490, 4045HL495, 4045HL496, 4045HL497, 4045HLV74, 4045HLV79, 6068HL280.



## Engine

### Cooling system / Viscous fan unit

**VPE1311** Pack qty 1

Viscous fan unit

John Deere AL213600

John Deere - 6190R, 6195M, 6195R, 6210R, 6215R, R4040i, R4050i, R4140i, R4150i.

John Deere - 6068HL289, 6068HL497, 6068HL501, 6068HL502, 6068HL503, 6068HL506, 6068HN063, 6068HN070, 6068HN071, 6068HN073.



## Engine

### Cooling system / Viscous fan unit

**VPE1312** Pack qty 1

Viscous fan unit

John Deere RE274870

John Deere - 4050, 4055, 4250, 4255, 4450, 4455, 8100, 8100T, 8200, 8200T, 8300, 8300T, 8400, 8400T.

John Deere - 6076HRW34, 6076HRW35, 6076T, 6081HRW02, 6081HRW03, 6081HRW06, 6081HRW07, 6081HRW08, 6081HRW09, 6081HRW10, 6359T, 6466D, 6466T.



## Engine

### Cooling system / Viscous fan unit

**VPE1313**      **Pack qty 1**

Viscous fan unit

John Deere RE190793

John Deere - 9320, 9320T, 9420, 9420T, 9520, 9520T.

John Deere - 6125HRW13, 6125HRW15, 6125HRW16, 6125HRW17.



## Engine

### Cooling system / Viscous fan unit

**VPE1314**      **Pack qty 1**

Viscous fan unit

John Deere RE274876

John Deere - 8420, 8420T.

John Deere - 6081HRW26, 6081HRW27, 6081HRW35, 6081HRW36.



## Engine

### Cooling system / Viscous fan unit

**VPE1315**      **Pack qty 1**

Viscous fan unit

John Deere RE274871

John Deere - 8100, 8110T, 8200, 8210T, 8300, 8310T, 8400.

John Deere - 6076HRW33, 6076HRW34, 6076HRW35, 6081HRW01, 6081HRW06, 6081HRW07, 6081HRW08, 6081HRW12, 6081HRW14, 6081HRW16.



## Engine

### Cooling system / Viscous fan unit

**VPE1316**      **Pack qty 1**

Viscous fan unit

John Deere RE574123

John Deere - 8520, 8520T.

John Deere - 6081HRW28, 6081HRW37, 6081HRW38.



## Engine

### Cooling system / Viscous fan unit

**VPE1318**      **Pack qty 1**

Viscous drive

John Deere AL79618

John Deere - 6100, 6100SE, 6200, 6200SE, 6300, 6300SE, 6400, 6400SE, 6506, 6600, 6620, 6800, 6900.

John Deere - 4039T, 4039TL001, 4039TL003, 4039TL004, 4039TL006, 4045D, 4045DL001, 4045DL002, 4045T, 4045TL001, 4045TL003, 6059TL001, 6068DL001, 6068HL270, 6068HLA70, 6068T.



## Engine

### Cooling system / Viscous fan unit

**VPE1319**      **Pack qty 1**

Viscous drive

John Deere AL155874

John Deere - 6515, 6520, 6520SE, 6620, 6620SE, 6820, 6920, 6920S, 6920SE, 7220, 7320, 7420, 7520.

John Deere - 6068DL070, 6068DL071, 6068HL270, 6068HL272, 6068HL470, 6068HL472, 6068HL473, 6068HL474, 6068HL475, 6068HLA71, 6068HLA72, 6068HLA73, 6068HRW01, 6068HRW59, 6068HRW60, 6068HRW61, 6068HRW62, 6068HRW70, 6068HRW71, 6068HRW72, 6068TL070, 6068TL072, 6068TL073, 6068TL074, 6068TP055, 6068TP056, 6068TP057, 6068TP058.



## Engine

### Cooling system / Viscous fan unit

**VPE1320**      **Pack qty 1**

Viscous drive

John Deere AL69178

John Deere - 3650, 6100, 6200, 6300, 6400.

John Deere - 4039TL001, 4039TL003, 4039TL004, 4039TL006, 4045DL001, 4045DL002, 4045TL001, 4045TL003, 6359T.



## Engine

### Cooling system / Viscous fan unit

**VPE1321**      **Pack qty 1**

Viscous drive

John Deere AL69177

John Deere - 3050, 3150, 3350.

John Deere - 6359D, 6359T.





## Engine

### Cooling system / Viscous fan unit

**VPE1322**      **Pack qty 1**

Viscous drive

John Deere AL111576

John Deere - 6910, 6910S.

John Deere - 6068TL052, 6068TL054, 6068TLA52, 6068TLA53.



## Engine

### Cooling system / Viscous fan unit

**VPE1326**      **Pack qty 1**

Viscous drive

Massey Ferguson 3783351M1

Massey Ferguson - 5425, 5435, 5445, 5455, 6235, 6245, 6255, 6445, 6455.

Perkins - 1004-40T, 1004-40TWG, 1104C-44, 1104C-44T.



## Engine

### Cooling system / Viscous fan unit

**VPE1330**      **Pack qty 1**

Viscous drive

Case International 82006847

Case New Holland 82006847

Ford Finis 82006847

Case International - MXM135, MXM150, MXM165, MXM180.

Ford New Holland - 8160, 8260, 8360, 8560, TM115, TM125, TM135, TM150, TM150 Brazil, TM165, TM180 Brazil, TV140.

Fiat - M100, M115, M135, M160.

Case International - PowerStar 7.5T.

Ford New Holland - PowerStar 7.5, PowerStar 7.5T, PowerStar 7.5TI.





## Engine

### Cooling system / Drain tap

**VPE3613** Pack qty 1

Radiator tap

John Deere AL155781

John Deere - 3215, 3220, 3415, 3420, 3800, 4630, 5430i, 6020, 6020SE, 6090MC, 6090RC, 6095MC, 6095RC, 6100MC, 6100RC, 6105M, 6105MC, 6105R, 6105RC, 6110M, 6110MC, 6110R, 6110RC, 6115M, 6115MC, 6115R, 6115RC, 6120, 6120M, 6120R, 6120SE, 6125M, 6125R, 6130, 6130M, 6130R, 6135M, 6135R, 6140M, 6140R, 6145M, 6145R, 6150M, 6150R, 6155M, 6155R, 6170M, 6170R, 6175M, 6175R, 6190R, 6195M, 6195R, 6210R, 6215, 6215R, 6220, 6220SE, 6225, 6230, 6230 Premium, 6230R, 6320, 6320SE, 6325, 6330, 6330 Premium, 6420, 6420S, 6420SE, 6425, 6430, 6430 Premium, 6515, 6520, 6520SE, 6525, 6530, 6530 Premium, 6534, 6534 Premium, 6620, 6620SE, 6630, 6630 Premium, 6820, 6830, 6830 Premium, 6920, 6920S, 6920SE, 6930, 6930 Premium, 6R 110, 6R 120, 6R 130, 6R 140, 6R 145, 6R 150, 6R 155, 6R 165, 6R 175, 6R 185, 6R 195, 6R 215, 6R 230, 6R 250, 7430 Premium, 7430E Premium, 7530 Premium, 7530E Premium.

John Deere - 4045DL070, 4045HL070, 4045HL072, 4045HL270, 4045HL271, 4045HL282, 4045HL283, 4045HL287, 4045HL288, 4045HL289, 4045HL472, 4045HL473, 4045HL474, 4045HL480, 4045HL481, 4045HL482, 4045HL490, 4045HL495, 4045HL496, 4045HL497, 4045HL500, 4045HL501, 4045HL502, 4045HL503, 4045HL504, 4045HL505, 4045HL506, 4045HL536, 4045HL555, 4045HL556, 4045HL557, 4045HLA70, 4045HLA72, 4045HLA73, 4045HN057, 4045HZ050, 4045HZ060, 4045HZ275, 4045TL070, 4045TL071, 4045TL072, 4045TL073, 4045TL270, 4045TL271, 4045TL272, 4045TZ250, 4045TZ270, 6068DL070, 6068DL071, 6068HL270, 6068HL272, 6068HL280, 6068HL281, 6068HL282, 6068HL283, 6068HL286, 6068HL289, 6068HL470, 6068HL471, 6068HL472, 6068HL473, 6068HL474, 6068HL475, 6068HL480, 6068HL481, 6068HL482, 6068HL483, 6068HL484, 6068HL487, 6068HL488, 6068HL490, 6068HL495, 6068HL497, 6068HL498, 6068HL499, 6068HL500, 6068HL501, 6068HL502, 6068HL503, 6068HL504, 6068HL505, 6068HL506, 6068HL507, 6068HL508, 6068HL530, 6068HL535, 6068HL538, 6068HL550, 6068HL555, 6068HL557, 6068HL558, 6068HLA70, 6068HLA71, 6068HLA72, 6068HLA73, 6068HNW03, 6068HWZ80, 6068TL072, 6068TL073, 6068TL074.



© VAPORMATIC

## Engine

### Air system / Exhaust guard

**VPE8315** Pack qty 1

Exhaust guard

John Deere AL177629

John Deere - 1654, 1854, 2054, 2104, 6130J, 6135J, 6150J, 6170J, 6190J, 6205J, 6210J, 6520, 6520SE, 6530, 6530 Premium, 6534, 6534 Premium, 6620, 6620SE, 6630, 6630 Premium, 6820, 6830, 6830 Premium, 6920, 6920S, 6930, 6930 Premium, 7220, 7320, 7420, 7430 Premium, 7430E Premium, 7520, 7530 Premium, 7530E Premium.

John Deere - 4045HL288, 4045HL481, 6068DL070, 6068HBM06, 6068HBM09, 6068HBM10, 6068HL270, 6068HL272, 6068HL280, 6068HL281, 6068HL282, 6068HL283, 6068HL284, 6068HL285, 6068HL287, 6068HL472, 6068HL473, 6068HL474, 6068HL480, 6068HL481, 6068HL482, 6068HL483, 6068HL484, 6068HL486, 6068HL487, 6068HL488, 6068HLA71, 6068HLA72, 6068HLA73, 6068HRW01, 6068HRW59, 6068HRW60, 6068HRW61, 6068HRW62, 6068HRW70, 6068HRW71, 6068HYH07, 6068TBM03, 6068TBM04, 6068TL072, 6068TL073, 6068TP055, 6068TP056, 6068TP057, 6068TRW01.



© VAPORMATIC

## Engine

### Air system / Vertical exhaust pipe

**VPE8316** Pack qty 1

Exhaust pipe

John Deere AL114382

John Deere - 6510, 6510SE, 6610, 6610SE, 6810, 6910, 6910S.

John Deere - 6068DL050, 6068TL050, 6068TL051, 6068TL052, 6068TLA50, 6068TLA51, 6068TLA52, 6068TLA53.



## Engine

### Air system / Exhaust manifold bolt

**VPE9471** Pack qty 4

Manifold bolt

John Deere R519486

John Deere - 4730, 4830, 5430i, 6230 Premium, 6330 Premium, 6430 Premium, 6530 Premium, 6534 Premium, 6630 Premium, 6830 Premium, 6930 Premium, 7430 Premium, 7430E Premium, 7530 Premium, 7530E Premium, 7630, 7730, 7830, 7830 Russia, 7930, 7930 Russia, 9540iWTS, 9970, T550, W540, W550, W650.

John Deere - 4045HL480, 4045HL481, 4045HL482, 6068HL480, 6068HL481, 6068HL482, 6068HL483, 6068HL484, 6068HL486, 6068HL487, 6068HL488, 6068HN052, 6068HN053, 6068HN056, 6068HN057, 6068HN065, 6068HNW02, 6068HNW04, 6068HRW64, 6068HRW65, 6068HRW78, 6068HWZ80, 6068HZ480, 6068HZ482, 6068HZ483, 6068RW203, 6068RW301, 6090HZ003, 6090HZ011.

#### Technical Details

Thread	M10
Length	125 mm
Thread pitch	1.5
Type	Set screw
Grade	B16
M10 x 125mm x 1.5mm.	



## Clutch and flywheel

### Clutch components / Thrust bearing carrier

**VPG4611** Pack qty 1

Long carrier

John Deere R141075

John Deere - 5076E, 5076EF, 5076EL, 5082E, 5090E, 5090EH, 5090EL, 5220, 5303, 5320, 5320N, 5403, 5415, 5420, 5420N, 5503, 5520, 5520N, 5605, 5615, 5705, 5715.



## Engine

### Cooling system / Rotary screen - fan bearing

**VPG5321**      **Pack qty 1**

Pilot bearing

John Deere JD29980

John Deere JD9449

John Deere - 1032, 1042, 1055, 1065, 1068H, 1072, 1075, 1075H4, 1085, 1085H4, 1133, 1144, 1155, 1157, 1158, 1166, 1166H4, 1169, 1169H4, 1170, 1174, 1174H4, 1177, 1177H4, 1188, 1188H4, 1470, 1570, 2054, 2056, 2058, 2064, 2066, 2254, 2256, 2258, 2264, 2266, 2266EXTRA, 3220, 3420, 4425, 4435, 4435HY, 5050E, 5055E, 5065E, 5075E, 5215, 5215F, 5215V, 5300, 5300N, 5303, 5310, 5310N, 5315, 5315F, 5315V, 5400, 5400N, 5403, 5410, 5410N, 5415, 5500, 5500N, 5503, 5510, 5510N, 5515, 5515 High crop, 5515F, 5515V, 5615F, 5615V, 7180, 7200, 7250, 7280, 7300, 7350, 7380, 7400, 7450, 7480, 7500, 7550, 7580, 7700, 7750, 7780, 7800, 7850, 7950, 7980, 8100, 8200, 8300, 8400, 8500, 8600, 8700, 8800, 9500, 9540iWTS, 9540WTS, 955, 9560iWTS, 9560WTS, 9580iWTS, 9580WTS, 9640iWTS, 9640WTS, 965, 9650, 9650CTS, 965H, 9660iWTS, 9660WTS, 9680iWTS, 9680WTS, 968H, 9700, 975, 975H4, 9770STS, 9780CTS, 9780iCTS, 9800, 985, 985H4, 9870STS, 9880iSTS, 9880iSTS HM, 9880STS, 9900, S560, S650, S660, S670, S670 HM, S680, S680 HM, S685, S685 HM, S690, S690 HM, S760, S770, S780, S785, S790, T550, T560, T660, T670, W540, W550, W650, W660.

#### Technical Details

Inner diameter	17 mm
Outer diameter	40 mm
Inner width	12 mm
Outer width	12 mm



## Rear axle

### Trumpet housing / Halfshaft outer bearing

**VPH2343**      **Pack qty 1**

Halfshaft bearing

John Deere JD10053

John Deere - 1640, 2040, 2040S, 2130, 2140.

#### Technical Details

Inner diameter	68.26 mm
Outer diameter	115 mm
Inner width	30 mm
Outer width	23.5 mm
Base size	Metric



## Crop processing

### Accelerator / Blower rotor bearing

**VPJ2057**      **Pack qty 1**

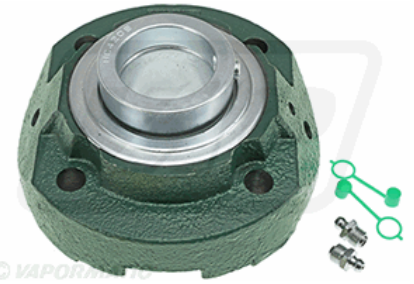
Bearing and housing

John Deere AZ100857

John Deere - 7180, 7200, 7250, 7280, 7300, 7350, 7380, 7400, 7450, 7480, 7500, 7550, 7580, 7700, 7750, 7780, 7800, 7850, 7950, 7980.

#### Technical Details

Inner diameter	45 mm
Width	149 mm
Height	70.5 mm
Hole centres	120.6 mm
Base size	Metric



## Cleaning

### Drive line / Shaker shoe drive shaft bearing

**VPJ2058**      **Pack qty 1**

Bearing

John Deere DQ09515

John Deere - 1165, 1170, 1175, 1175H, 1450, 1550.

#### Technical Details

Inner diameter	30 mm
Outer diameter	62 mm
Inner width	26 mm
Outer width	18 mm



## Grain transfer

### Clean grain transfer / Unloading auger bearing

**VPJ2059**      **Pack qty 1**

Bearing

John Deere DQ09151

John Deere - 1165, 1175, 1175H, 1470, 1570.

#### Technical Details

Inner diameter	35 mm
Outer diameter	72 mm
Inner width	37.7 mm
Outer width	19 mm



## Transmission

### Reduction / Halfshaft seal wear ring

**VPJ2101**      **Pack qty 1**

Ring

John Deere R57269

John Deere - 2054, 2056, 2058, 2064, 2066, 2254, 2256, 2258, 2264, 2266, 2266EXTRA, 6140J, 6150M, 6610, 6710, 6800, 6810, 6820, 6830, 6830 Premium, 6900, 6910, 6910S, 6920, 6920S, 6920SE, 6930, 6930 Premium, 7200, 7210, 7400, 7405, 7410, 7420, 7425, 7510, 7520, 7525, 9400, 9410, 9450, 9500, 9500SH, 9510, 9510SH, 9540iWTS, 9540WTS, 9550, 9550SH, 9560iSTS, 9560iWTS, 9560WTS, 9580iWTS, 9580WTS, 9600, 9610, 9640iWTS, 9640WTS, 9650, 9650CTS, 9660iWTS, 9660WTS, 9680iWTS, 9680WTS, 9770STS, 9780CTS, 9780iCTS, 9870STS, 9880iSTS, 9880iSTS HM, 9880STS, C670, CTS, CTS II, S560, S660, S670, S680, S685, S690, S690 HM, S760, S770, T550, T560, T660, T670, W540, W550, W650, W660.



## Axle

### Front axle / Wheel bearing

**VPJ3806**      **Pack qty 1**

Bearing

John Deere M156019

John Deere M176848

John Deere - Gator Turf, HPX 815E, HPX Diesel, XUV 620i Petrol, XUV 850D Diesel.

#### Technical Details

Inner diameter	36 mm
Outer diameter	64 mm
Inner width	37 mm
Outer width	37 mm
Base size	Metric
Seal	2RS



## Front axle 4wd

### Axle beam / Driveshaft bearing

**VPJ3807**      **Pack qty 1**

Bush

John Deere R82982

John Deere - 7600, 7610, 7700, 7710, 7800, 7810, 8100, 8200, 8300, 8400.

John Deere - Dana, John Deere.

#### Technical Details

Inner Diameter	56 mm
Outer Diameter	60 mm
Width	33.5 mm
Type	Split
Material	Steel / Bronze





---

## Axle

### Front axle / Wheel bearing circlip

**VPJ8309**      **Pack qty 1**

Snap ring

John Deere 40M5099

John Deere - 1055, 1065, 1068H, 1072, 1075, 1075H4, 1085, 1085H4, 1155, 1157, 1158, 1166, 1166H4, 1174, 1174H4, 1188, 1188H4, 2054, 2056, 2058, 2064, 2066, 2254, 2256, 2258, 2264, 2266, 2266EXTRA, 5045E, 5050E, 5050E Turkey, 5055E, 5058E, 5065E, 5065E S American, 5067E, 5075E, 5075E Asia, 5075E S American, 5082E, 5103 Australia, 5203 Australia, 5303 Australia, 5303 N Africa, 5303 S Africa, 5303 Turkey, 5310 Asia, 5403 Australia, 5403 N Africa, 5403 S Africa, 5403 Turkey, 5503 Turkey, 5620, 5720, 5820, 6010, 6020, 6100, 6110, 6120, 6145J, 6145R, 6150J, 6150M, 6155M, 6155R, 6165J, 6170J, 6170M, 6175M, 6175R, 6185J, 6190J, 6195R, 6200, 6205J, 6210, 6210M, 6215R, 6220, 6800, 6810, 6820, 6900, 6910, 6910S, 6920, 6920S, 6R 165, 6R 185, 6R 215, 7420, 7500, 7505, 7515, 7520, 7630, 7730, 7830, 7930, 940, 945, 950, 955, 960, 965, 965H, 968H, 970, 975, 975H4, 985, 985H4, M-Gator 4x4 A2, S670, S680, S690, S770, S780, S790, T550, T560, T660, T670, W540, W550, W650, W660, X9 1000, X9 1100, XUV 625i Petrol, XUV 825E, XUV 825i Petrol, XUV 825i S4, XUV 825M, XUV 825M S4, XUV 835E, XUV 835M, XUV 835R, XUV 855D Diesel, XUV 855D S4, XUV 855E, XUV 855M, XUV 855M S4, XUV 865E, XUV 865M, XUV 865R.

Carraro - Carraro.

John Deere - CCLS.

ZF Axles - APL2025, AS2025, AS2035.

Internal. OD = 79.5mm, Width = 6.6mm, Thickness = 2.5mm.

---



## Brakes

### Hydraulic actuation / Master cylinder

**VPJ8318**      **Pack qty 1**

Master cylinder brake

Case International 3145559R91

Case International - 644, 743, 744, 745S, 844, 844S, 845.

International Harvester - Deluxe.



## Service

### Filtration / Hydraulic filter

**VPK1638**      **Pack qty 1**

Filter

Case International K946089

Case New Holland K946089

David Brown K946089

Case International - 1394, 1494, 1594, 1694.

David Brown - 1210, 1212, 1390, 1410, 1412, 1490, 1690.



## Panels

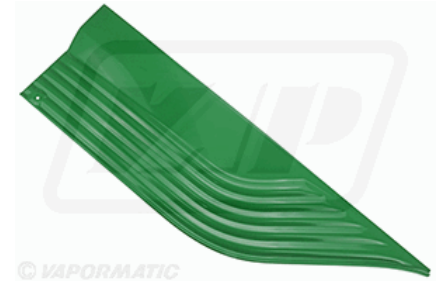
### Bonnet / LH side panel

**VPM1249**      **Pack qty 1**

LH side panel

John Deere AL120114

John Deere - 6515, 6520, 6520SE, 6525, 6530, 6530 Premium, 6534, 6534 Premium, 6620, 6620SE, 6630, 6630 Premium, 6820, 6830, 6830 Premium, 6920, 6920S, 6920SE, 6930, 6930 Premium, 7425, 7430 Premium, 7430E Premium, 7525, 7530 Premium, 7530E Premium.



© VAPORMATIC

## Panels

### Bonnet / Battery tray

**VPM1262**      **Pack qty 1**

Battery tray

John Deere AL112808

John Deere AL118561

John Deere - 6010, 6010SE, 6110, 6110SE, 6205, 6210, 6210SE, 6310, 6310SE, 6410, 6410SE, 6505.



© VAPORMATIC

## Panels

### Bonnet / Battery tray

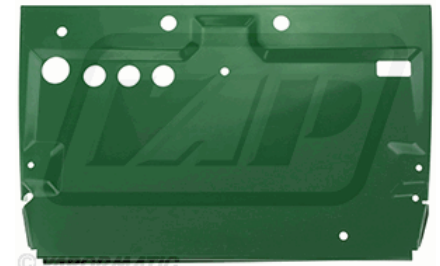
**VPM1263**      **Pack qty 1**

Battery tray

John Deere AL118522

John Deere AL79635

John Deere - 6505, 6510SE, 6610, 6610SE, 6810, 6910, 6910S.



© VAPORMATIC

## Panels

### Bonnet / RH side panel

**VPM1264**      **Pack qty 1**

RH side panel

John Deere AL120110

John Deere - 6010, 6010SE, 6110, 6110SE, 6205, 6210, 6210SE, 6310, 6310SE, 6410, 6410SE.



© VAPORMATIC

## Panels

### Lighting / High mounted worklamp bezel

**VPM3852**      **Pack qty 1**

Light cowl

John Deere L101854

John Deere - 6010, 6100, 6110, 6200, 6210, 6300, 6310, 6400, 6410, 6506, 6510, 6610, 6800, 6810, 6900, 6910, 6910S.

Front, LH.



© VAPORMATIC

## Panels

### Lighting / High mounted worklamp bezel

**VPM3853**      **Pack qty 1**

Light cowl

John Deere L102378

John Deere - 6010, 6100, 6110, 6200, 6210, 6300, 6310, 6400, 6410, 6506, 6510, 6610, 6800, 6810, 6900, 6910, 6910S.

Front, RH.



## Clutch and flywheel

### Clutch / Main drive plate

**VPG3154**      **Pack qty 1**

Clutch plate

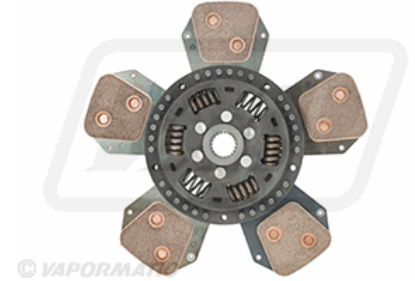
Massey Ferguson 7029022M1

Massey Ferguson - 4245, 4345.

Massey Ferguson - Single 330 LuK.

#### Technical Details

Manufacture type	LuK
LuK Ref	333025110
Material type	Cerarmetallic
Plate size	327 mm
Number of splines	21
Shaft size	25 x 29mm
Number of pads	5
Basic version	Torsion damper plate
Cushion deflection	Dual segment cushion
Friction material	Cerarmetallic
Torsion damper	Compensating spring type



## Engine

### Fuel system / Fuel filler cap

**VPD4621**      **Pack qty 1**

Fuel filter cap

Massey Ferguson 3782340M1

Massey Ferguson - 4225, 4235, 4240, 4245, 4255, 4265, 4270, 8210, 8220.



## Engine

### Lubrication / Oil pressure pipe

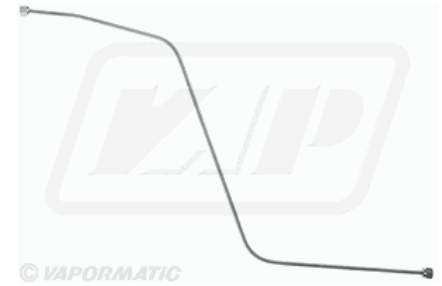
**VPD5248**      **Pack qty 1**

Pipe

Massey Ferguson 899453M92

Massey Ferguson - 135, 148, 35, 35X.

Perkins - A3.152, AD3.152.



## Engine

### Lubrication / Oil pressure pipe

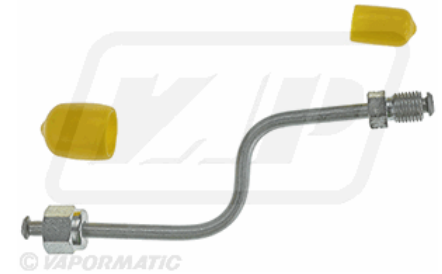
**VPD5249**      **Pack qty 1**

Pipe

Massey Ferguson 899451M92

Massey Ferguson - 135, 148.

Perkins - AD3.152.



## Engine

### Cooling system / Viscous fan unit

**VPE1327**      **Pack qty 1**

Viscous drive

Massey Ferguson 4290578M1

Massey Ferguson - 6480 Tier 3, 7480 Tier 3.

Perkins - 1106D-E66TA.



## Engine

### Cooling system / Viscous fan unit

**VPE1328**      **Pack qty 1**

Viscous drive

Massey Ferguson 3783350M1

Massey Ferguson - 5465, 5470, 6235, 6245, 6255, 6270, 6280, 6290, 6460, 6470, 8210, 8220.

Perkins - 1004-40T, 1004-40TWG, 1006-60T, 1006-60TW, 1104C-E44TA, 1106C-E60TA.

Sisu Diesel - 44DTA.



## Service

### Filtration / Fuel filter

**VPD6266**      **Pack qty 1**

Fuel filter

Case New Holland 2854623

JCB 32/926037

John Deere RE522868

Stanadyne 36799

Stanadyne 37292

John Deere - 5076EN, 5082E, 5083E, 5090E, 5090EH, 5090EL, 5090EN, 5093E, 5101E, 5425, 5425N, 5525, 5603, 5625, 6100E, 6110E, 6125E, 6125J.

John Deere - 4045HBM01, 4045HLV53, 4045HLV56, 4045HLV60, 4045HP053, 4045HP059, 4045TLV53, 4045TLV54, 4045TLV56, 4045TLV64, 4045TP060, 4045TP071, 4045TP072, 4045TP073, 4045TP079.



## Engine

### Cooling system / Viscous fan unit

**VPE1331**      **Pack qty 1**

Viscous drive

Case New Holland 81872264

Ford Finis 81872264

Ford New Holland - 5640, 6640, 7740, 8340, TS100 Brazil, TS110 Brazil, TS120 Brazil.

Ford New Holland - PowerStar, PowerStar 4.4, PowerStar 5.0, PowerStar 5.0T, PowerStar 7.5T.



All Vapormatic quality replacement parts carry an industry leading **12 month parts and labour warranty**. For further information on specific items please visit [www.vapormatic.com](http://www.vapormatic.com)

Whilst specifications are considered to be correct at the time of printing, we reserve the right to change specifications without prior notification. E. & O. E. Original equipment manufacturers names and part numbers are quoted for reference purposes only and are not intended to suggest that our replacement parts are made by the original equipment manufacturer.