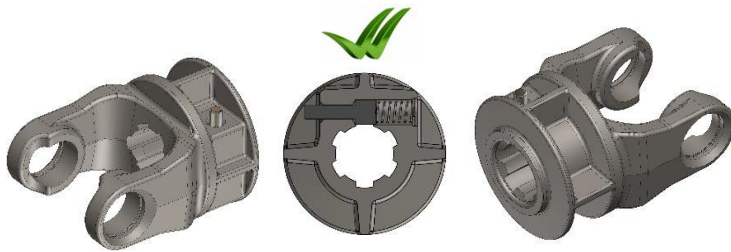

Bulletin	UK	Export	Issued
1447	YES	YES	16/03/22



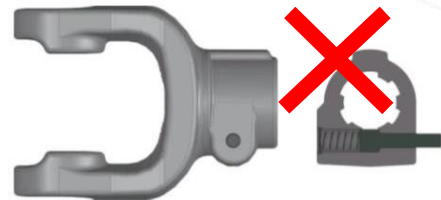
PTO DRIVE SHAFT QUICK RELEASE YOKE DESIGN CHANGE

Introducing the new SECURE LOCK design

Safety is of paramount importance to Vapormatic and BENZI. Our outer yokes now feature a new secure lock design which replaces the previously common standard quick release pin design.



NEW Secure lock push-pin design



Standard push-pin design – Phasing out

The secure lock design encases the push-pin, avoiding any possible entanglement for the operator: The new locking system has been successfully tested and approved according to the new EN12965 requirements. The new secure lock push-pin design will replace the standard push-pin on the implement side of the PTO drive shafts.

The standard “Collar” locking system already fully conforms to the new entanglement test.



Standard Collar design



Standard CV Collar design

You don't need to do anything. Part numbers remain the same.

The new design will automatically replace existing shafts and yokes as and when they are available.

Bulletin	UK	Export	Issued
1447	YES	YES	16/03/22

EN 12965 Safety norm revision – Important notification

A revision of the safety norm **EN 12965** for PTO drive shafts has been approved by the Technical Committee CEN/TC 144. **BENZI** along with other major PTO Drive shafts manufacturers actively participated with the Technical Committee works for the norm revision.

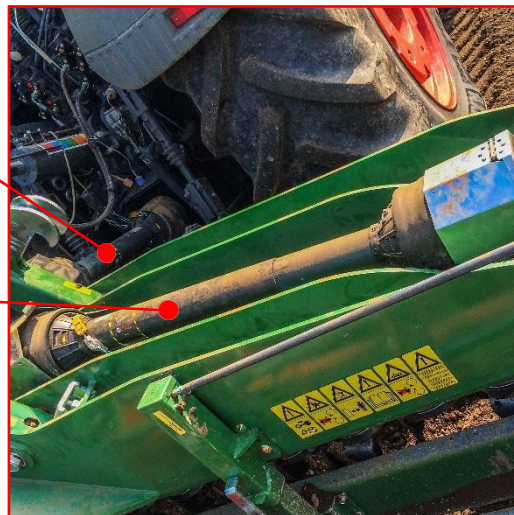
The main change is an additional “Entanglement test” which is intended to verify that the locking system on both ends of the shaft shall not cause any entanglement for the operator while the driveline is in rotation.

Primary PTO drive shaft

From the tractor to the machine

Secondary PTO drive shaft

Inside the machine

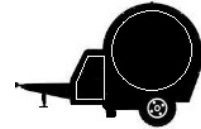


The European Standard EN 12965 “*specifies safety requirements and their verification for the design and construction of power take-off (PTO) drive shafts and their guards linking a tractor or a self-propelled machinery to a recipient machinery*” (Primary PTO drive shafts). “*It describes methods of eliminating or reducing risks which need specific requirements, including risks resulting from misuse, reasonably foreseeable by the manufacturer*”.

Bulletin	UK	Export	Issued
1447	YES	YES	16/03/22



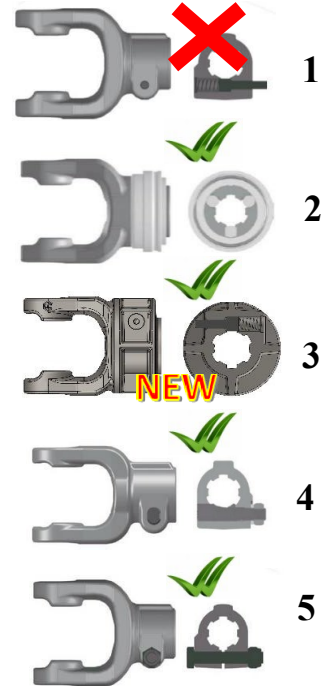
EN 12965 – Locking system requirements



TRACTOR SIDE (P.T.O.)



IMPLEMENT SIDE (P.I.C.)

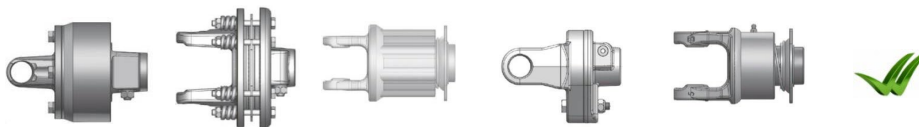


MAIN LOCKING SYSTEMS

- 1 – Standard push-pin
- 2 – Collar
- 3 – Secure lock push-pin
- 4 – Conic bolt
- 5 – Interfering bolt

Additional locking systems and torque limiters VS new EN 12965:

Besides the standard push-pin, all the additional locking systems (interfering bolt / conic bolt / ...) which require a tool in order to be installed on / removed from the implement side (P.I.C.) can still be used and therefore will not change; the same applies to torque limiters and safety devices.



Push-pin end yokes phasing out - All complete shaft and outer yokes with standard push-pin will be phased out and replaced by the new secure lock design for each product series.

Part Numbers The standard push-pin yokes will be replaced by the new version but part numbers of both PTO drive shafts & components (yokes and applicable safety devices) will not change.



All Vapormatic quality replacement parts carry an industry leading **12 month parts and labour warranty**. For further information on specific items please visit www.vapormatic.com